

# wirata®

## INSTRUCTION MANUAL

Model No.:

**HC-906**

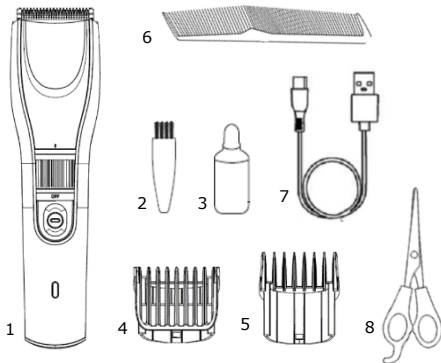
Please read *Instruction Manual* before use  
& follow ALL the instructions carefully.

<b>MODEL NO.</b>	<b>HC-906</b>
CURRENT	0.2A
VOLTAGE	DC 5V
FREQUENCY	50/60Hz
BATTERIES	1x Li-ion 3.7V DC 600mAh
INPUT	100-240V, 50/60Hz, 0.2A
OUTPUT	5V DC/1000mA

## WHAT'S IN THE BOX

1. Hair Clipper – 1set
2. Oil, Cleaning brush, comb & scissors– 1 set
3. Charging cable – 1pc
4. Attachment Comb – 2pcs (1-10mm / 11-20mm)

## PARTS DESCRIPTION



### MAIN COMPONENT :

(Product may vary slightly from what is illustrated)

- |                   |                   |
|-------------------|-------------------|
| 1: Hair Clipper   | 6: Hair comb      |
| 2: Cleaning Brush | 7: Charging cable |
| 3: Oil            | 8: Scissors       |
| 4: Comb (11-20mm) |                   |
| 5: Comb (1-10mm)  |                   |

## GENERAL INSTRUCTION

The hair clipper with two easily replaceable comb attachments provides possibility of obtaining different lengths of cutting and clipping hairline.

Please read these instructions carefully. Pay your special attention to important safety instructions. Keep this **"Instructions for use"** for future reference.

## SAFETY INSTRUCTIONS

Herewith information concerns your health and safety. It is obligatory to learn about all instructions for use and safety information before first usage of the clipper.

1. The hair clipper is intended for domestic use. In case it is used for commercial use, the guarantee conditions change.
2. Connect the power supply adaptor to AC mains supply 100-240 V.
3. Disconnect the power supply adaptor from the mains supply outlet when not in use or before cleaning.
4. Do not unplug pulling by the cord.
5. The supplying cord should not hang over the edge of a table or desktop, nor touch hot surface.
6. This device is intended for cutting natural hair, only. It is allowed to use it only for human hair; it cannot be used for cutting artificial or animal hair. Using the product for other than intended purposes shall cause nullifying the guarantee.
7. Do not touch the power supply adaptor with wet hands, especially when plugging or unplugging it from the mains supply outlet.
8. For the operation with mains use only the adaptor supplied with the hair clipper.
9. Connect only to easily accessible mains supply outlet.

10. Do not cover the adaptor; it can lead to dangerous temperature increase.
11. Always At first & Do not use during bath.
12. Never immerse the device and cord in water or other liquids.
13. Do not place the hair clipper on wet surface or cloth during operation.
14. Do not place or store the device in the area where it can fall into water.
15. Do not use the device with damaged comb attachment. It can cause injuries hazard.
16. Never try to remove the foreign bodies out of the clipper using sharp objects (i.e., comb).
17. Always clean after using.
18. This appliance is not intended for use by persons (including children) with reduced physical, sensory or mental capabilities, or lack of experience and knowledge.
19. Children should be supervised to ensure that they do not play with the appliance.
20. Do not apply not recommended attachments.
21. The hair clipper can be used both as a mains and cordless device.
22. The cut hair should be clean, dry and combed.
23. Put the towel around the neck to avoid getting the cut hair under the collar.
24. Use the hair clipper only as intended according to the herewith instructions.
25. Animal clipper, hair clipper, and appliances for manicure and pedicure can be used by children aged from 3 years under supervision.
26. This appliance contains batteries that are only replaceable by skilled persons.

**WARNING:** Do not use the device near water, over the bath tub, pool or other water basin.

\*Observe the above-mentioned rules in order to avoid burning, electric shock or fire hazard. Make sure you understand the instructions.



## HOW TO OPERATE

### HANDLING & OPERATION OF HAIR CLIPPER

The hair clipper can be used both as a main supplied or cordless device.

#### 1. OPERATION WITH POWER SUPPLY ADAPTOR

At first insert the adaptor plug into the device and then insert the adapter plug into the mains supply outlet (100-240 V). In mains supplied mode the device is ready for use.

#### 2. LOADING ACCUMULATORS AND CORDLESS OPERATION:

- a) In order to load the device, move the ON/OFF switch to "OFF" position. Place the device on the loading base. Connect the loading base to the adapter cord.
- b) Insert the plug of the adapter into appropriate mains supply outlet (100-240 V). The loading process is indicated by red pilot light glowing. When fully loaded the hair clipper can operate approximately 90 minutes.
- c) The hair clipper accumulator obtains optimum power after three cycles of loading and unloading. 2 hours is enough for next loading. In order to provide long life of accumulators, they should be completely unloaded before loading.

#### 3. COMB ATTACHMENTS INSERTING/ REPLACING:

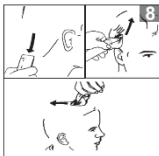
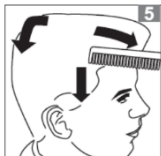
- a) It is possible to select one of two comb attachments:
  - The comb A can cut hair for 20 cutting lengths from 1-10mm, 0.5 mm per set.
  - The comb B can cut hair for 20 cutting lengths from 11-20mm, 0.5 mm per set.
- b) Select the attachment according to the length of cutting.
- c) Insert it into the side guiding grooves of the clipper.
- d) Make sure that the two side protrusions are visibly

- locked in fastening inlets of the comb attachment.
- e) Replace one attachment removing it and inserting another as described above.
  - f) Turn right the cutting length adjustment knob, to increase the length of cutting or left to reduce it.

#### **4. HAIR CUTTING AND BEARD TRIMMING WITH COMB:**

Make sure that the appliance is fully charged when you start to cut. Only use appliance on clean, dry hair. Do not use it on freshly washed hair.

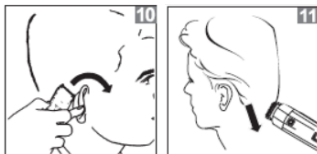
- a) Comb the hair in the direction of growth.
- b) Slide the hair clipping comb into the guiding grooves.
- c) When you are trimming for the first time, start at the maximum trimming length setting to familiarize yourself with the appliance.
- d) Switch on the appliance.
  - Move the appliance through the hair slowly.
  - To trim in the most effective way, move the appliance against the direction of hair growth.
  - Since all hair does not grow in the same direction, you need to move the appliance in different directions.
  - Make sure that the flat part of the comb is always fully in contact with the scalp to obtain an even result.
  - Make overlapping passes over the head to ensure that you cut all hair that needs to be cut.
  - To achieve a good result with curly, sparse or long hair, use a comb to guide the hair towards the appliance.



## 5. CUTTING HAIR WITHOUT ATTACHMENT:

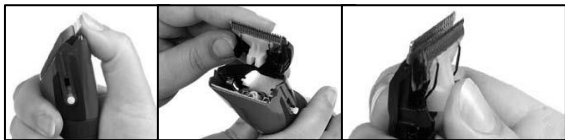
**WARNING:** The cutting head is very sharp. Injury hazard!

- a) You can cut the hair in uniform length of 0.5–1 mm without comb attachment.
- b) For clipping the hairline of bristle and whiskers, neck shaving:
  - Move the hair clipper slowly along hair.
  - Turn the device so, that the back part was directed upwards.
  - Place the edge of the cutting head without comb attachment on desired length of bristle hairline.
  - Move down the clipper in operation.



## CLEANING AND MAINTENANCE

- a) Do not hold the adaptor with wet hands while plugging and unplugging from mains supply outlet.
- b) The adaptor and supplying cord should be always dry. It is forbidden to immerse the hair clipper in water or other liquids for cleaning, as the device is not waterproof. It can damage the live parts (accumulators).
- c) Set the ON/OFF switch to "OFF" position.
- d) Always switch off the hair clipper and unplug the adaptor from the mains supply outlet before cleaning and maintenance.
- e) Remove the comb attachment from the hair clipper.
- f) In order to remove the cutting head, at first turn hair thinning knob (to OFF position).
- g) Press forward cutting head with your thumb, in order to release the cutting head from the frame.
- h) If necessary, rinse the plastic comb attachments under running water, and then dry them thoroughly.
- i) Remove the remains of hair from the cutting head with attached cleaning brush.
- j) Insert the protrusion of cutting head back into the locking hole in the frame of cutting head.
- k) Press gently the cutting head in, until you hear a clicking sound of locking.



**TIPS:** In order to reduce friction, from time to time insert one or two drops of oil between the blades and distribute it evenly.

\* You can use any kind of acid less oil (such as oil for sewing machine). Remove the exceeding oil with cloth.



## ECOLOGY – ENVIRONMENT PROTECTION

Each user can contribute to protect the environment. It is neither difficult nor expensive. In order to do so:

- a) Return cardboard packages to recycling points.
- b) Throw polyethylene (PE) bags into appropriate containers.
- c) Batteries contain substances harmful to the natural environment. Do not throw them away with other household waste.
- d) Return used batteries to recycling points. Before disposing of or returning the appliance to a recycling point make sure to remove the batteries from the battery compartment.
- e) Return a worn-out appliance to an appropriate collecting point as the components of the appliance may pose a threat to the environment.



### ENVIRONMENT PROTECTION

The manufacturer/ importer does not accept any liability for any damages resulting from unintended use or improper handling.

## SPECIFICATIONS

**Unit:** HC-906

**Built-in rechargeable:** 1x Li-ion 3.7V DC 600mAh  
**batteries**

**Input:** 100-240V, 50/60Hz, 0.2A

**Output:** 5V DC/1000mA



The product technical parameters are included at the name plate. The device is built in II class isolation, it does not require grounding. This hair clippers meet the requirements of effective standards. The device meets the requirements of the following directives:

- Low Voltage Device (LVD) – 2006/95/EC.
- Electro- Magnetic Compatibility (EMC) – 2004/108/EC.
- The product is marked with CE symbol on the name plate.