

wirata®

INSTRUCTION MANUAL

Model No.:

BG-288

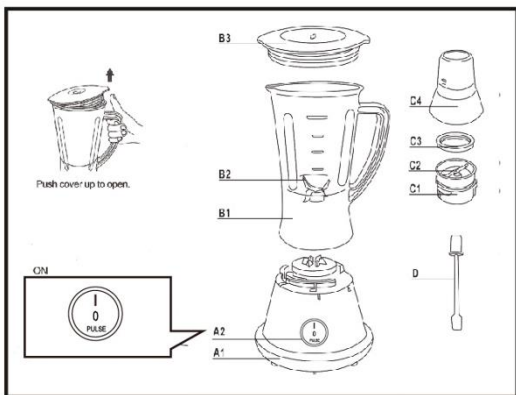
Please read *Instruction Manual* before use
& Follow ALL the instructions carefully.

| MODEL NO. | BG-288 |
|-------------------|----------|
| Power Consumption | 350W |
| Voltage | 220-240V |
| Frequency | 50Hz |
| Volume Capacity | 1.0L |

WHAT'S IN THE BOX

1. Blender set – 1pc
2. Grinder Set – 1pc
3. Scraper – 1pc
4. Instruction Manual – 1pc

PARTS DESCRIPTION



MAIN COMPONENT :

(Product may vary slightly from what is illustrated)

B1: Blender jar

B2: Blade

B3: Lid

A1: Motor housing

A2: ON/OFF Switch

C1: Jar holder

C2: Blade

C3: Sealing ring

C4: Grinder jar

D: Scraper

GENERAL INSTRUCTIONS

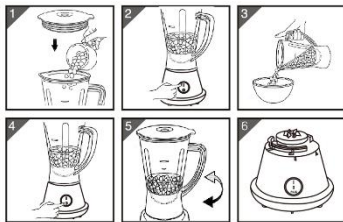
When using the electrical appliance, the following basic safety precautions should always be followed.

Please read these instructions carefully. Pay your special attention to important safety instructions. Keep this **"Instructions for use"** for future reference.

SAFETY INSTRUCTIONS

1. Before connecting to the mains, make sure that:
 - The blender is completely mounted;
 - The speed selector is on " OFF".
 - The voltage specified at the bottom side corresponds to the mains voltage.
 - Never put the blender to work without the jar mounted.
 - Keep the blender away from children.
 - When the motor is running:
 - i. Do not place nor remove the jar.
 - ii. Do not insert objects into the jar.
 - iii. Do not put your hand into the jar.
2. Always remove the plug from the socket after use.

ASSEMBLY INSTRUCTION



1. Put the sealing ring in the jar holder (Figure.2)
2. Mount the jar holder by turning the jar clockwise until locked (Figure.3)
3. Put the jar holder with mounted jar on the motor housing. Turn the jar holder clock-wise until locked (Figure.4) (Note: Do not dismount the filled jar without jar holder)
4. Place the lid onto the jar by turning it clock wise until locked.

HOW TO OPERATE

1. **Speed Selection**

Select the appropriate blending speed by sliding the control knob from "off":

- To the right for minimum, medium and maximum speed successively
- To the left for very short (repetitive) operation ("pulse").

2. **Suggested Speed**

- "Minimum" is for hot drinks (max.80 °C)
- "Medium" is for liquids and for the preparation of non-solid ingredients such as for milk-shakes, pancake (light batter), omelettes.
- "Maximum" is for meat and solid food such as cheese, coconut, beans. nuts and ice cubes.
- "Pulse" is for ingredients which require repetitive on/off switching or only very short blending at maximum speed, slide the knob to the left to switch the blender on. Release the knob to switch it off automatically.
- Always have the lid on the jar when blending.
- For good results do not fill beyond 1500 ml (Fig.5)
- It may be necessary to interrupt the blending from time to time and remove particles sticking onto the jar. Use a soft spatula for this purpose.
- Cut meat or other solid food into small pieces before putting them into the blender jar.

- For good results with hard ingredients, feed a series of small portions into the jar rather than putting one large quantity into it.
- Blend only one ice cube at a time.
- If the blending is not performed, quickly switch off the appliance and switch a few times to 'pulse', or stir the ingredients with a spatula (not while blending) or reduce the contents of the jar.

3. **The Mill Attachment (Blender 2,3)**

Important: Never run empty, never place liquids in the bowl.

- Will mill coffee beans, nuts chocolate to any degree of fineness, make bread, biscuit and cornflake crumbs, it will not chop any item into bite sized pieces.
- To use the mill attachment:
 - i. Place ingredients in the bowl. Bread, toast or chocolate should be broken into smallish pieces. Do not fill beyond 2/3 of capacity.
 - ii. Make sure that the twist lock lid is properly secured before switching on.
 - iii. Depending on the degree of fineness of the ground coffee which is required, the mixer should be switched on from 15 to 20 seconds.

4. **The Grater Attachment (Blender 3)**

Important: Never run empty. never place liquids in the bowl.

- Parmesan and other cheeses (except cream varieties) can be finely or coarsely grated within a few seconds.
- To use the grater attachment:
- Cut the cheese into small pieces and place in the bowl. Do not fill beyond 2/3 of capacity.
- Replace the cover, make sure that. The twist lock lid is properly secured before switching on and turn on the grater for about 10 seconds. The fineness of the grated cheese depends on the length of time the machine is run.

CLEANING INSTRUCTION

- Disassemble the jar and the jar holder after each use. Wash them in soapy water. Then rinse them with clean water. Do not wash them in a dish-washer. You can clean the motor housing with a humid cloth. Cleaning is easiest when done immediately after use.



ENVIRONMENT PROTECTION

Dispose the appliance according to the local garbage regulations.

Never throw it away to the rubbish, so you will help to the improvement of the environment.